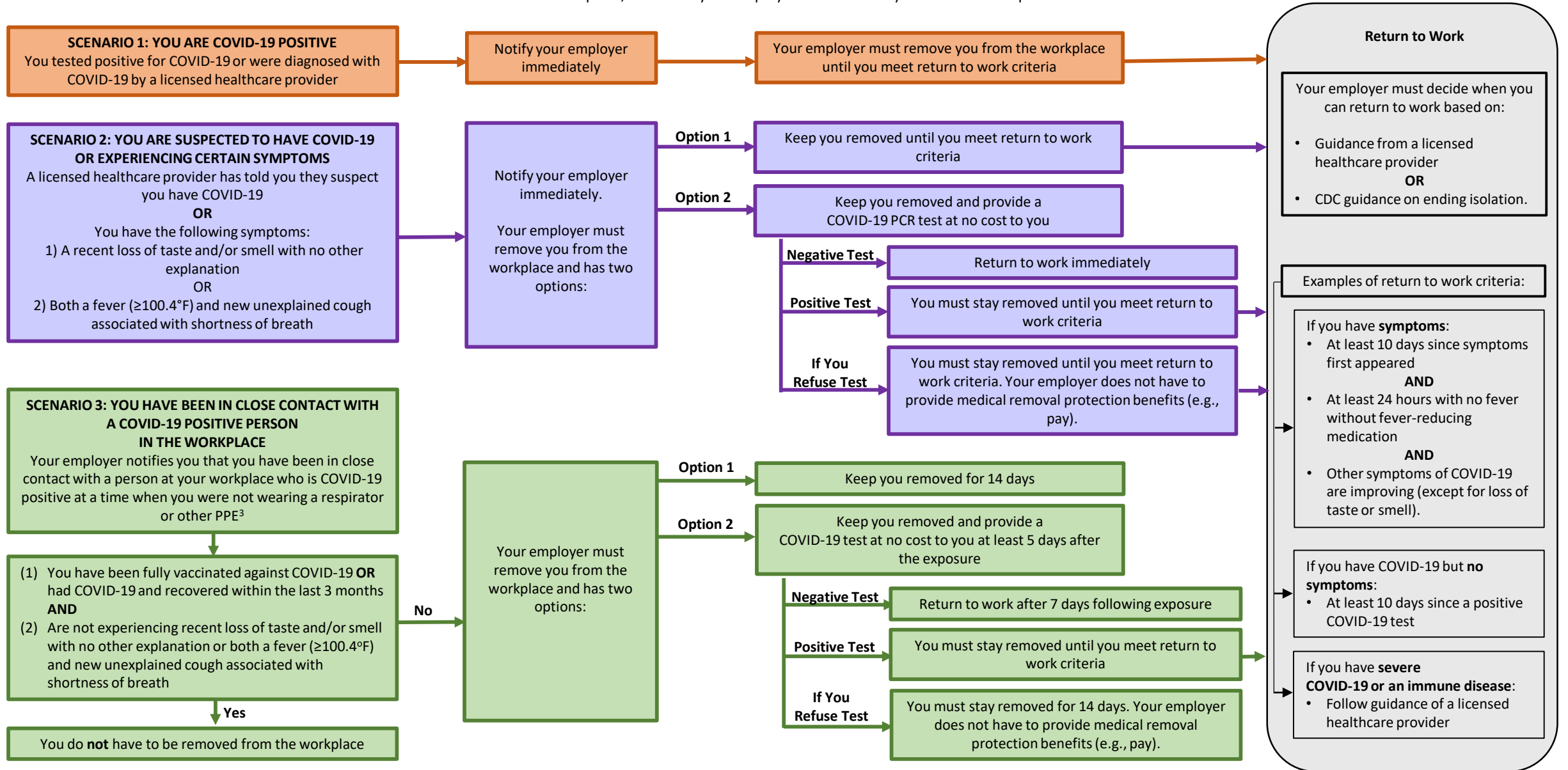


ETS Guidance for Employees – Notification to Employer and Paid¹ Medical Removal for COVID-19

This flow chart explains when you need to notify your employer about COVID-19-related issues, when your employer must notify you about COVID-19 exposures in the workplace, and when your employer must remove you from the workplace.²



¹ OSHA is requiring medical removal protection benefits to be paid only by employers that have more than 10 employees.

² Your employer may choose to remove or test you for other COVID-19-related reasons not required by the ETS (e.g., additional symptoms from the CDC list or exposure to someone who is COVID-19 positive outside the workplace).

³ Your employer is not required to notify you following exposure to a patient with confirmed COVID-19 if you work in a place where services are normally provided to suspected or confirmed COVID-19 patients (e.g., emergency rooms, urgent care facilities).